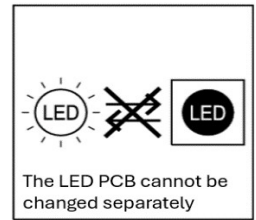
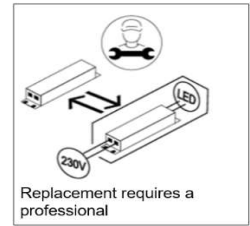
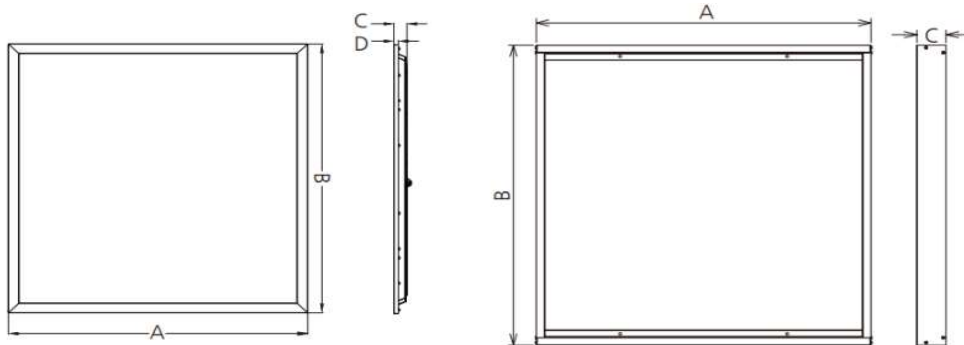


## Square GEN 3

[FI] Asennus- ja huolto-ohje  
 [UK] Installation and maintenance instructions  
 [SE] Installations- och underhållsinstruktioner

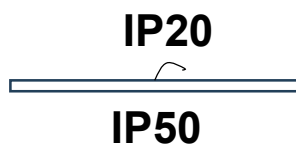
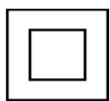


The luminaire must not be covered with insulating material



Code	Dimension(mm)				Size(mm)
	A	B	C	D	
6060	595	595	25	9	595*595*25
30120	1195	295	25	9	1195*295*25

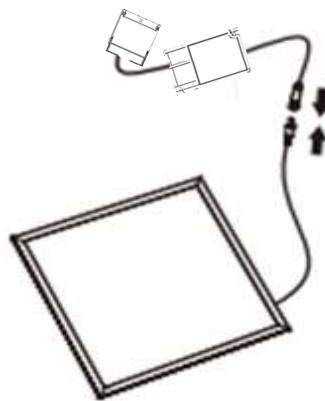
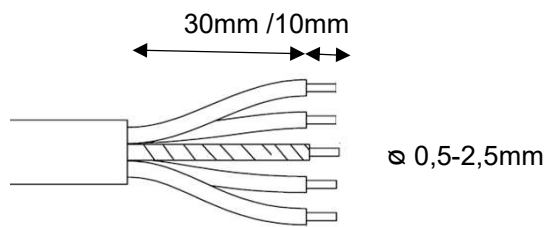
Note In a separate ceiling surface installation, the hole size 570 x 570mm / 270 x 1170mm



Copyright Greenled Oy

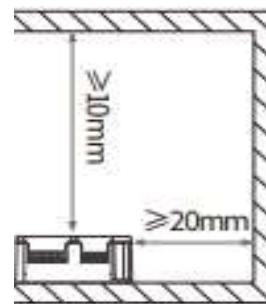
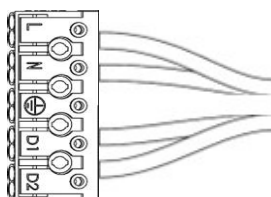
**Greenled Oy**  
 Oritkarintie 4  
 90400 Oulu Finland  
 p. 020 125 5800  
[info@greenled.fi](mailto:info@greenled.fi)  
 10.4.2024

# 1. Wiring



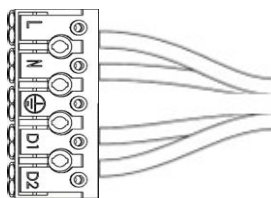
## ON/OFF

1= (L) Ruskea, Brown, Brun  
 N = Sininen, Blue, Blå  
 PE = Kelta-vihreä, Ground wire, Jordledning,

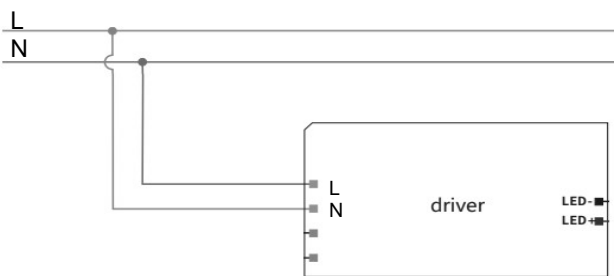


## DALI

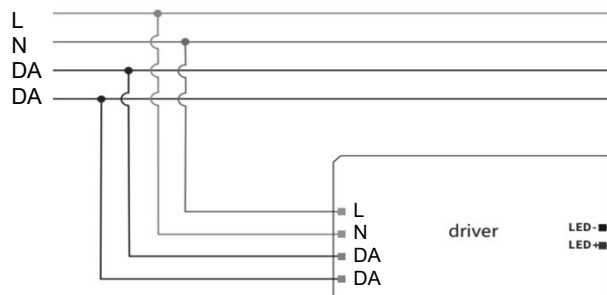
L= Ruskea, Brown, Brun  
 N = Sininen, Blue, Blå,  
 PE = Kelta-vihreä, Ground wire, Jordledning  
 D1= Musta, Black, Svart  
 D2= Harmaa, Gray, Grå



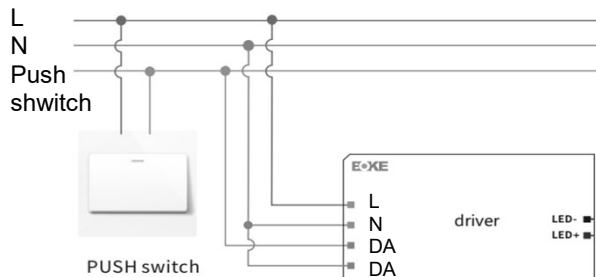
### on/off



### Dali



### Shwitch DIM/ push DIM



After installation according to the wiring diagram of pushDIM dimming application, short press the pushbutton 1 times or short press the pushbutton 5 times quickly within 3s , the driver will automatically switch to the pushDIM dimming mode. Max. 50 drivers per pushDIM control line.  
 Turn on or turn off:short press pushbutton for 0.2-1s.  
 Dimming: long press pushbutton for 1-5s.

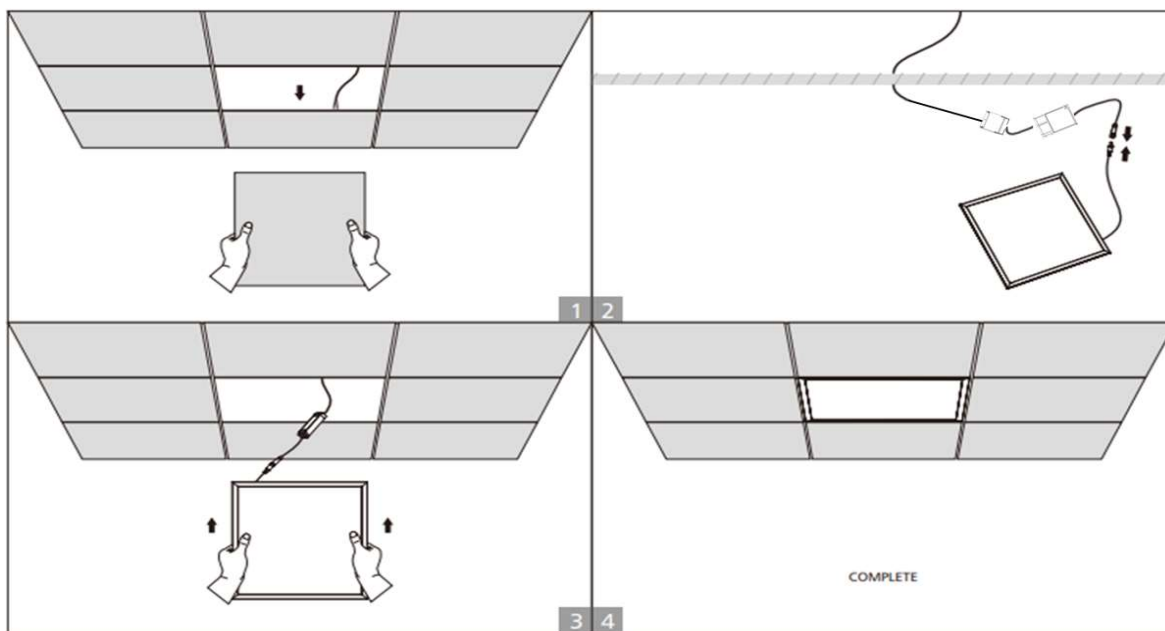
## 2. DIP switch

Standard microprisma 43W(1100mA)/29W(750mA)/20W(500mA)/18W(450mA) Prated(w) can be changed as below

Output			1	2	3	4
Prated(w)	Irated(mA)	Voltage(Vdc)				
18.90	450	6-42	ON	ON	ON	ON
21.00	500	6-42	ON	--	ON	ON
31.50	750	6-42	ON	ON	ON	--
41.80	1100 ★	6-38	--	--	--	--



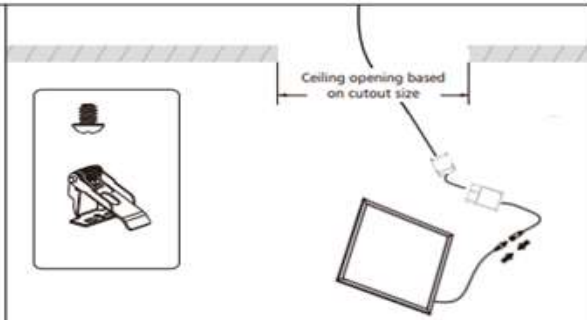
## 3.1. Recessed



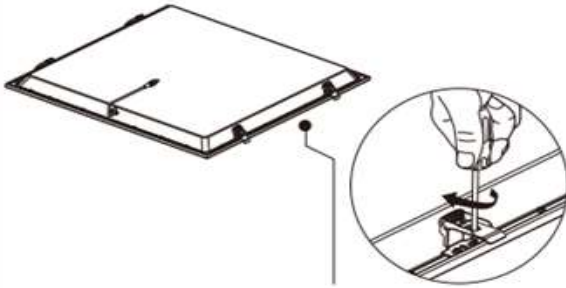
### 3.2. Recessed with clips

Cutout Size	
Panel Size	Cutout
595x595mm	570x570mm
295x1195mm	270x1170mm

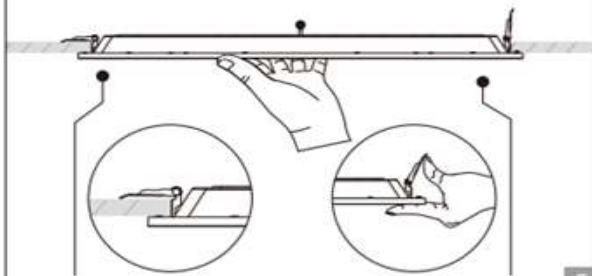
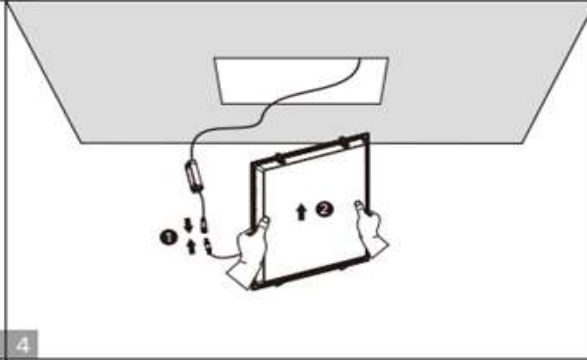
Clips should be purchased separately as an accessory



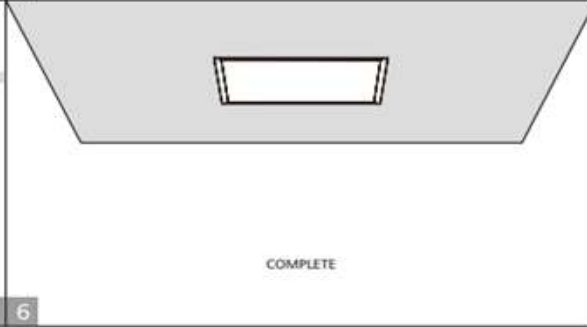
1 2



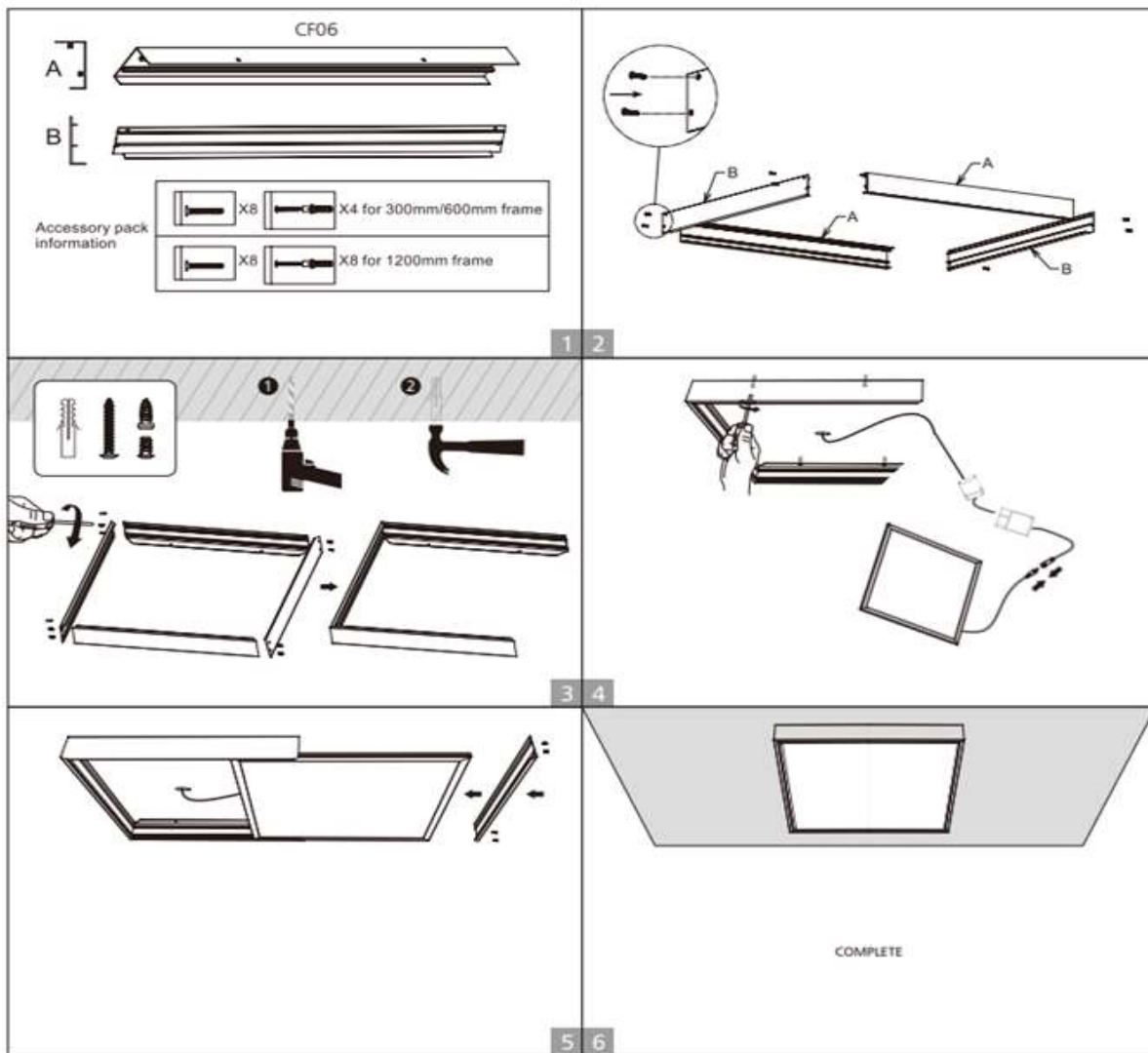
3 4



5 6

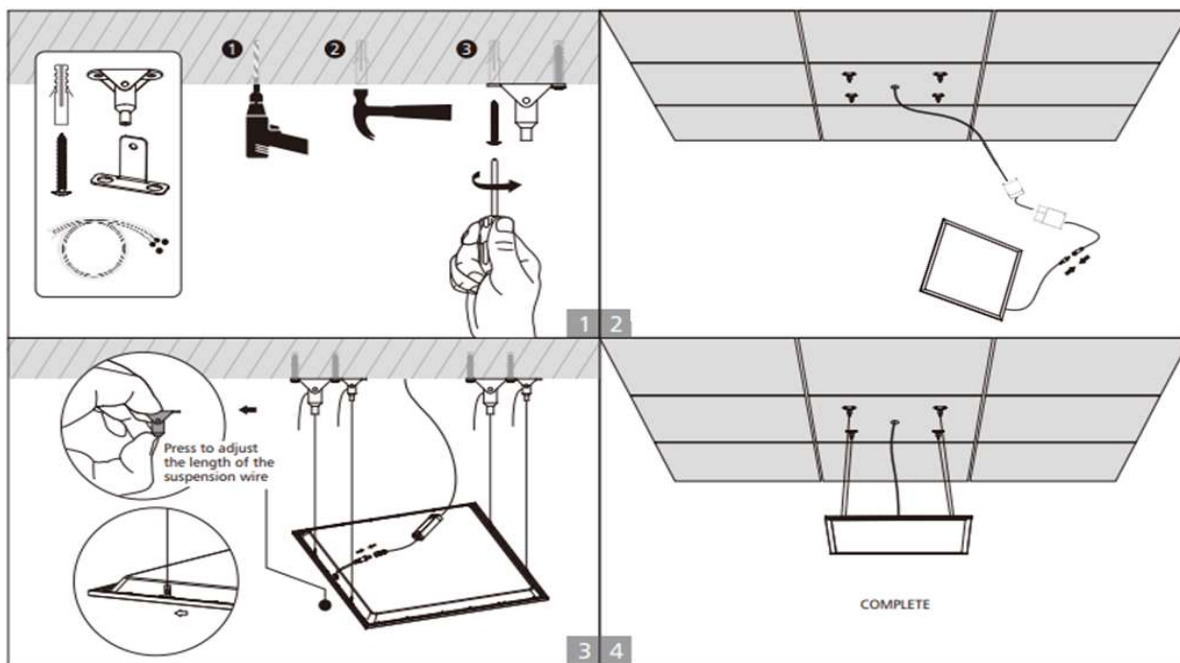


### 3.3. Surface mount



**Warning:** Total thickness of led panel light and driver can not exceed 56mm.

### 3.4. Pendant



FI Nämä ohjeet tulee säilyttää ja luovuttaa kiinteistön käyttäjälle.  
UK It is appropriate that this information is passed on to the user of the installation.  
SE Det är lämpligt att denna information överlämnas till användaren av anläggningen.

---



## Turvallisuusvaroitukset:

Ennen asennusta tai huoltotyötä kytke valaisin irti sähköverkosta välttääksesi sähköiskun vaaran!

- Asennus / huoltotyön saa tehdä vain valtuutettu henkilö
  - Valaisimen asennuksen / huoltotyön saa suorittaa vain pätevä henkilö näiden ohjeiden mukaisesti.
  - Valmistaja ei kannu vastuuta valaisimen väärästä käytöstä
  - Älä katso suoraan päällä olevaan valaisimeen
  - Valaisimen valonlähteen saa vaihtaa ainoastaan Greenled, Greenledin valtuuttama huoltaja tai vastaavan pätevyyden omaava henkilö
- 



## Safety notes:

Before installation or change work disconnect the power to reduce electrical shock risk!

- Installation / maintenance can only be done by a skilled personnel
  - Installation / maintenance of luminaire must be performed by qualified person following the instructions given in the instruction set
  - The manufacturer bears no liability for damage caused by inappropriate use or application
  - Do not stare at the operating light source
  - The light source contained in this luminaire shall only be replaced by the Greenled or Greenled's service agent or a similar qualified person
- 



## Säkerhetsvarningar:

Koppla alltid bort armaturen från elnätet i samband med installation ti den som använder armaturen.

- Installations- ocn underhållsarbeten får endast utföras av en behöring installatör
  - Installations-/underhållsarbetet får endast utföras enligt dessa anvisningar av en person med tillräckliga kunskaper
  - Tillverkaren ansvarar ej för felaktig användning av armaturen
  - Titta aldrig rakt in i en påslagen armatur
  - Ljuskällan inuti armaturen får endast bytas av antingen Greenled, en Greenled-auktoriserad servicetekniker eller en person med motsvarande kompetens
- 

Copyright Greenled Oy

**Greenled Oy**

Oritkarintie 4

90400 Oulu Finland

p. 020 125 5800

[info@greenled.fi](mailto:info@greenled.fi)

**GREENLED**