



Clean industry

Origi Clean industry



Origi Clean industry is a top-quality professional luminaire for 2.5-6m high industrial, food industry and workplace lighting, which takes the lighting lifecycle to a new era. The design-protected structure and philosophy make the luminaire completely exceptional compared to all other luminaires on the market. A long warranty, unlimited serviceability, heat resistance and incredible light output make Origi the last luminaire you will ever need.

For the lighting designer and user, Origi offers high-quality lighting with low glare, which supports visual efficiency, safety and error-free operation. The luminaire meets the highest requirements of the indoor lighting standard EN-12464-1. The Origin frame is designed to last and be reused, and is made of recycled aluminum, minimizing the burden on nature.

Application area: 2.5-6m high industrial IP65 and workplace lighting. Optional IP66 food industry, pressure washing resistant and corrosion resistant.

Installation: suspension, ceiling surface, lighting suspension rail (no top cover), With top cover; suspension, ceiling surface and lighting suspension rail. Additional ceiling surface + seal.



GREENLED

PATENT PENDING -
SUOMALAINEN INNOVAATIO

BENEFITS

Lifecycle: Origi is the first professional luminaire designed to last forever, with no compromises on components. Energy efficiency (144-183lm/W), intelligence and optics ensure low kWh/m² results. L90/100,000 h and CLO enable the use of a low maintenance factor in lighting design, supporting efficient w/m² calculation according to EPBD

Design: The stunning Scandinavian design follows the golden ratio.

Luminaire-specific sensor: The luminaire equipped with a motion and presence sensor has an NLC Bluetooth or Casambi sensor integrated into the end cap, which improves the coverage of the wireless network.

Serviceability: The luminaire is serviceable with components according to the Zhaga standard, both by Greenled and other lighting professionals. It is compatible with linear LED cards and optics according to Zhaga Book 7 and all LED cards and optics according to Zhaga Book 15. In addition, the luminaire can use linear ballasts according to Zhaga Book 13. Serviceability and spare parts availability are ensured by Zhaga Book 20 and Zhaga Book 25 standards.

DALI2 data supports smart buildings (EPBD-SRI), and DiiA-certified features (251, 252, 253) enable data storage, energy reporting, diagnostics (overvoltage and thermal) and predictive failure information 1000–5000 h before the end of the life cycle (control management system support required)

Price and warranty: Despite its superior life cycle, Origi is very competitively priced compared to any similar products.

APPLICABILITY

In locations where you want to invest in quality and ease of maintenance. Origin's maintainability enables a radical reduction in property maintenance costs and comfort. The luminaire has 2 different lengths. Note. TOP COVER and TOP COVER + Seal can be selected separately for clean rooms. In addition, pressure washing resistant IP66 for demanding food industry locations.

Installation: Without top cover; suspension, ceiling surface and luminaire suspension rail. With top cover; ceiling surface, suspension and luminaire suspension rail. In addition, ceiling surface + seal. Luminaire connection from the end with a quick connector.

Origis is suitable for both wireless and wired control locations.



VARIANTS

Model	Type code	Power	Luminous flux	Luminous efficiency	Lifespan	Operating temperature
Origi Clean 1200	GLORCL12017	17 W	3074lm	183 lm/W	L90B50 >100 000h, C10 100 000h	-25 - +55°C
Origi Clean 1200	GLORCL12025	25 W	4434 lm	179 lm/W	L90B50 >100 000h, C10 100 000h	-25 - +55°C
Origi Clean 1200	GLORCL12033	33 W	5747 lm	173 lm/W	L90B50 >100 000h, C10 100 000h	-25 - +55°C
Origi Clean 1200	GLORCL12051	51 W	8185 lm	161lm/W	L90B50 >100 000h, C10 100 000h	-25 - +50°C
Origi Clean 1200	GLORCL12072	72 W	10728 lm	150 lm/W	L90B50 >100 000h, C10 100 000h	-25 - +45°C
Origi Clean 1200	GLORCL12085	85 W	12184 lm	143 lm/W	L90B50 >100 000h, C10 100 000h	-25 - +35°C
Origi Clean 1800	GLORCL18052	52 W	8988 lm	173 lm/W	L90B50 >100 000h, C10 100 000h	-25 - +55°C
Origi Clean 1800	GLORCL18066	66 W	11056 lm	167 lm/W	L90B50 >100 000h, C10 100 000h	-25 - +50°C
Origi Clean 1800	GLORCL18095	95 W	14799 lm	155 lm/W	L90B50 >100 000h, C10 100 000h	-25 - +50°C
Origi Clean 1800	GLORCL18126	126 W	18275 lm	145 lm/W	L90B50 >100 000h, C10 100 000h	-25 - +35°C

Notes

All values at +25°C ambient temperature, CCT 4000K, CRI 80, luminous flux +-10% tolerance, power +-10% tolerance. The luminaire is 10% CLO-compensated. Please note the LMS (lumen maintenance factor).

DIMENSIONS

Model	Type code	Lenght (L)	Height (H)	Wide (W)
Origi Clean 1200	GLORCL12017	1161mm	78mm	108mm
Origi Clean 1200	GLORCL12025	1161mm	78mm	108mm
Origi Clean 1200	GLORCL12033	1161mm	78mm	108mm
Origi Clean 1200	GLORCL12051	1161mm	78mm	108mm
Origi Clean 1200	GLORCL12072	1161mm	78mm	108mm
Origi Clean 1200	GLORCL12085	1161mm	78mm	108mm
Origi Clean 1800	GLORCL18052	1738mm	78mm	108mm
Origi Clean 1800	GLORCL18066	1738mm	78mm	108mm
Origi Clean 1800	GLORCL18095	1738mm	78mm	108mm
Origi Clean 1800	GLORCL18126	1738mm	78mm	108mm



GENERAL DESCRIPTION

Color temperature

3000, 4000, 5000, K ⁽¹⁾

Color rendering index

RA ≥ 80

Light source protection

PMMA (MP)⁽²⁾ PC (OP)⁽³⁾

Enclosure class

IP65 (option IP66)

Corrosion resistance

IP66 in version C5H (stainless steel/anodized)

Impact resistance

PC IK08, PMMA IK06

Supply voltage:

220-240 Vac

Frequency:

50-60 Hz

PF:

> 0.90

THD:

< 20%

Coupling:

1 pcs quick connector, 2 pcs quick connectors. Can be chained max 5*2.5mm2 OR max 3*2.5mm2 and DALI +/-.

Controllability:

DALI2 data, On/Off(CLO), NLC node, NLC+ PIR sensor
Casambi + PIR sensor.

Color:

Aluminum

Frame material:

Recycled aluminum

Warranty:

5 years or 8 years, STUL warranty 2 years. Luminaire-specific sensors 2 years or 5 years.

Standard light CLO (Constant Light Output).

CLO: the luminaire maintains the same amount of light throughout its 100,000h lifespan. CLO programming 10%. All ON/OFF, DALI and wireless electronic ballasts.

Accessories (installation):

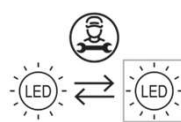
Standard end brackets. Extras; E1500187 Origi MEK bracket 50-80mm (RST), E1500198 Origi MEK bracket 80-120mm (RST), E1500201 Origi horizontal wire bracket

With TOP COVER; E1900059 Protective plate Origi 1151mm top cover. E1900065 Protective plate Origi 1728mm top cover. E1500223 Origi MEK 70 End cap bracket, E1500224 Origi MEK 82 End cap bracket, E1500225 Origi MEK 110 End cap bracket, E1500226 Origi MEK 70 Adjustable End cap bracket, E1500227 Origi MEK 82 Adjustable End cap bracket, E1500228 Origi MEK 110 Adjustable End cap bracket

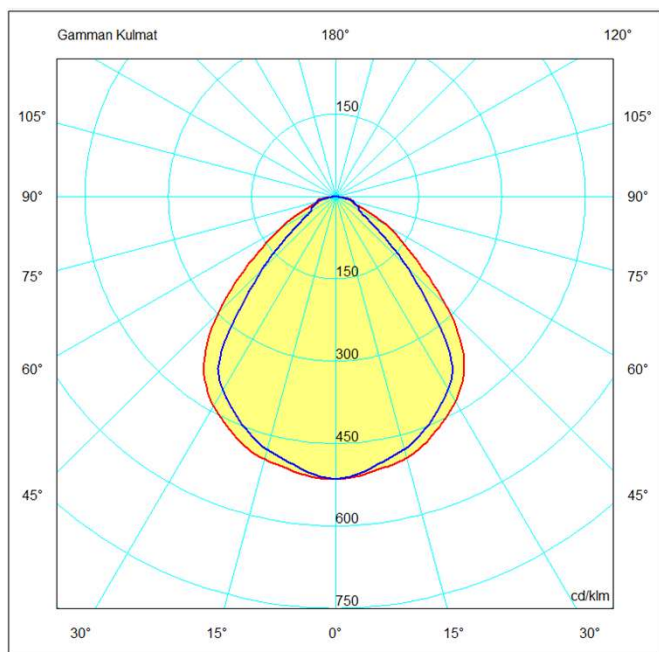
Notes:

- 1) SDCM ≤ 3
- 2) Does not cause splinters when broken, suitable for the food industry. PMMA (MP microprisma) Resistant to alkaline detergents and alcohol solutions.
- 3) PC (OP opal) IK class is IK- 08. Does not cause splinters when broken.

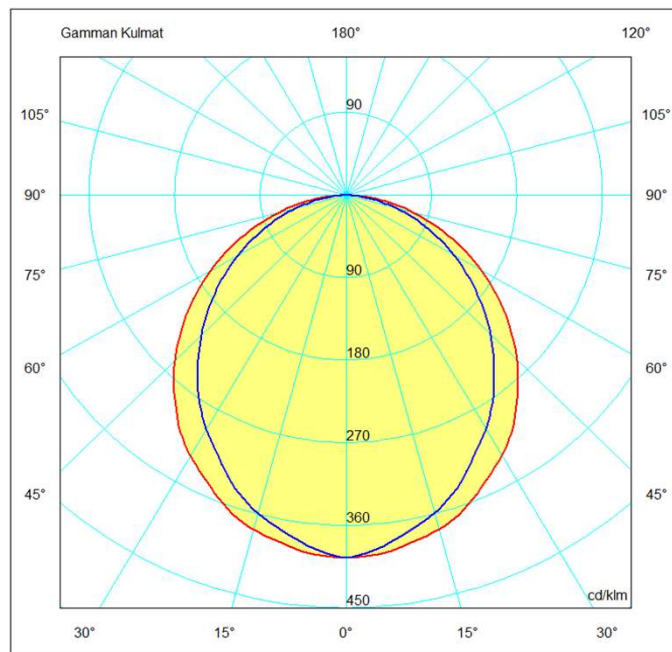
D-marked luminaire that meets the requirements for limited surface temperature. (IEC 60598-2-24)



LIGHT DISTRIBUTION



Origi Clean industry PMMA MP (Micro prisma)



Origi Clean industry PC OP (Opal)

Accessories

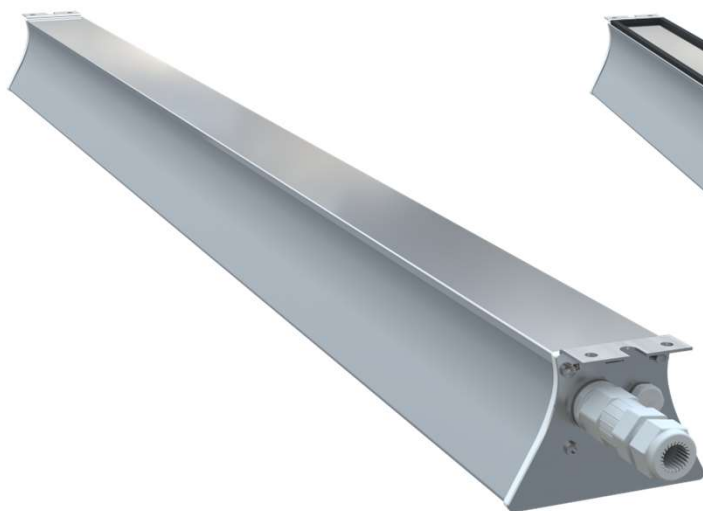
E 1900059 Suojalevy 1151mm TOP COVER

E 1900065 Suojalevy 1728mm TOP COVER

Accessories

E 1900059 Suojalevy 1151mm TOP COVER+ tiiviste

E 1900065 Suojalevy 1728mm TOP COVER+ tiiviste

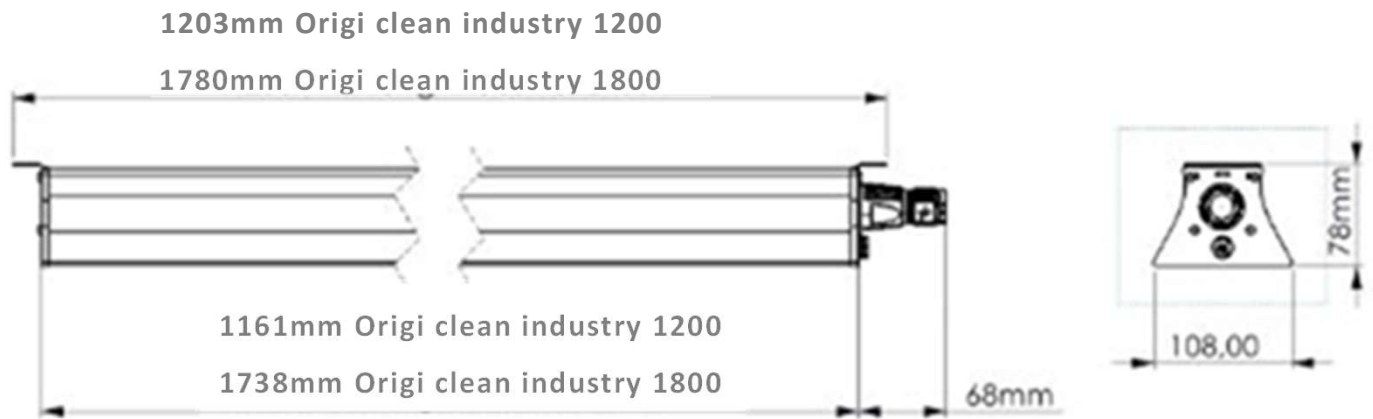


Need more information?
Call 020 125 5800 or click
here.

GREENLED



DIMENSIONAL DRAWING



BRACKETS (End bracket as standard)

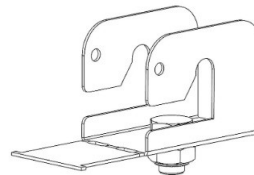
**E 1500187 Origi MEK
bracket 50-80mm (RST)**



**E 1500198 Origi MEK
bracket 80-120mm (RST)**

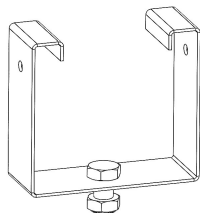


**E1500201 Origi End cap
horizontal wire bracket**

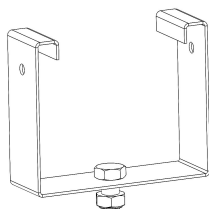


With TOP COVER

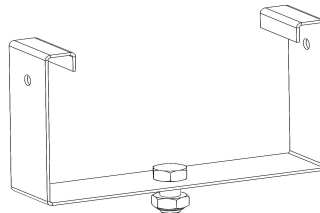
**E 1500223 Origi MEK 70 End
cap bracket**



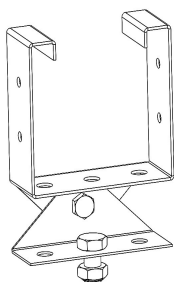
**E 1500224 Origi MEK 82 End
cap bracket**



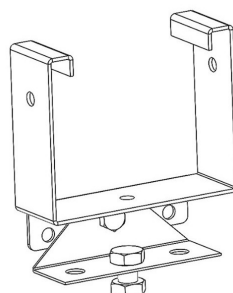
**E 1500225 Origi MEK 110
End cap bracket**



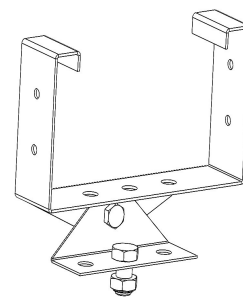
**E 1500226 Origi MEK 70
adjustable End cap bracket**



**E 1500227 Origi MEK 82
adjustable End cap bracket**



**E 1500228 Origi MEK 110
adjustable End cap bracket**



FUSE DIMENSIONS

	B10	B16	B20	C10	C16	C20
14 -35W	17	28	31	26	42	52
36-75W	14	23	25	21	34	43
76-130W	8	13	16	12	20	24

Download attachments from
the website

GREENLED OY

Oritkarintie 4
90400 Oulu
p. 020 125 5800

GREENLED

